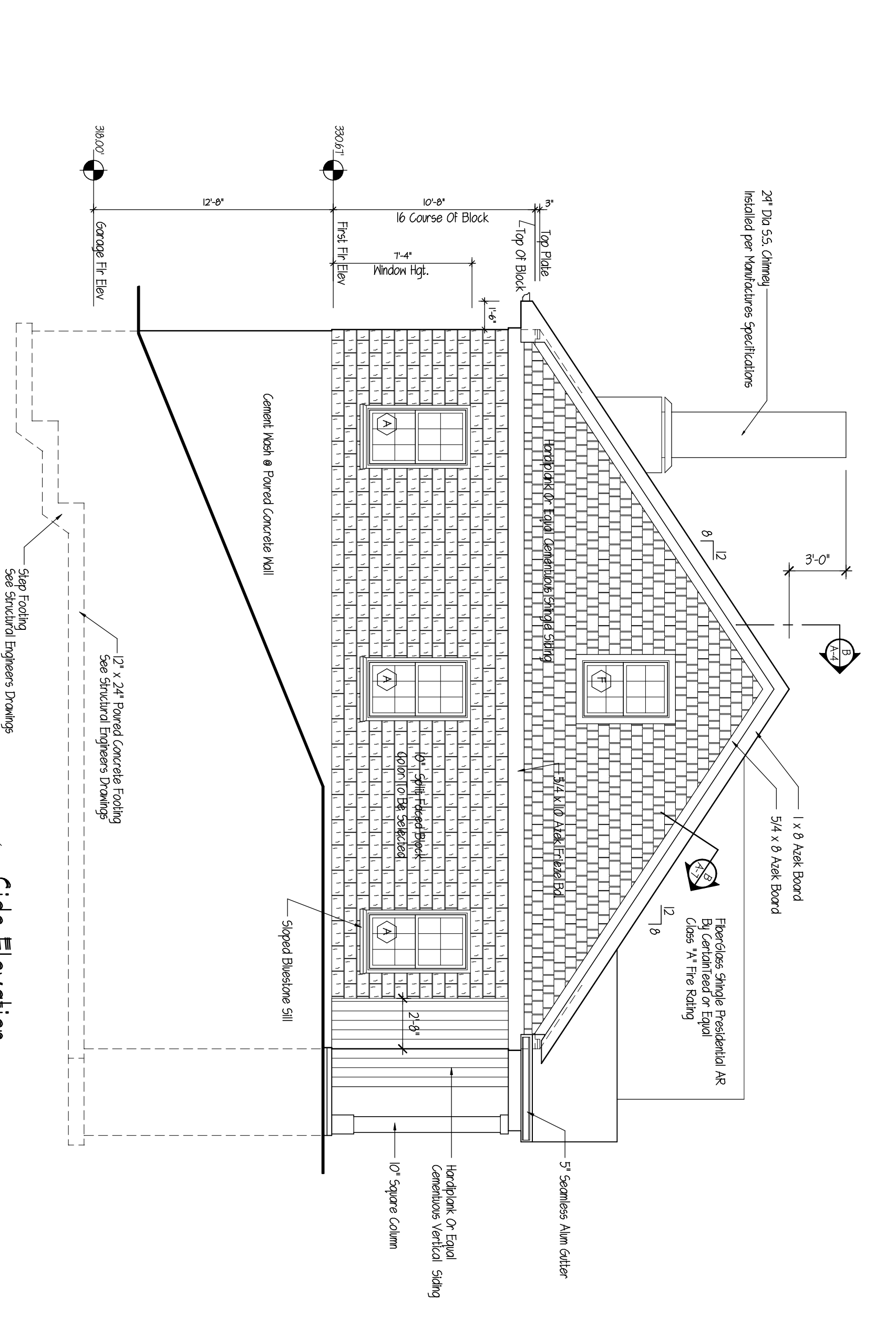
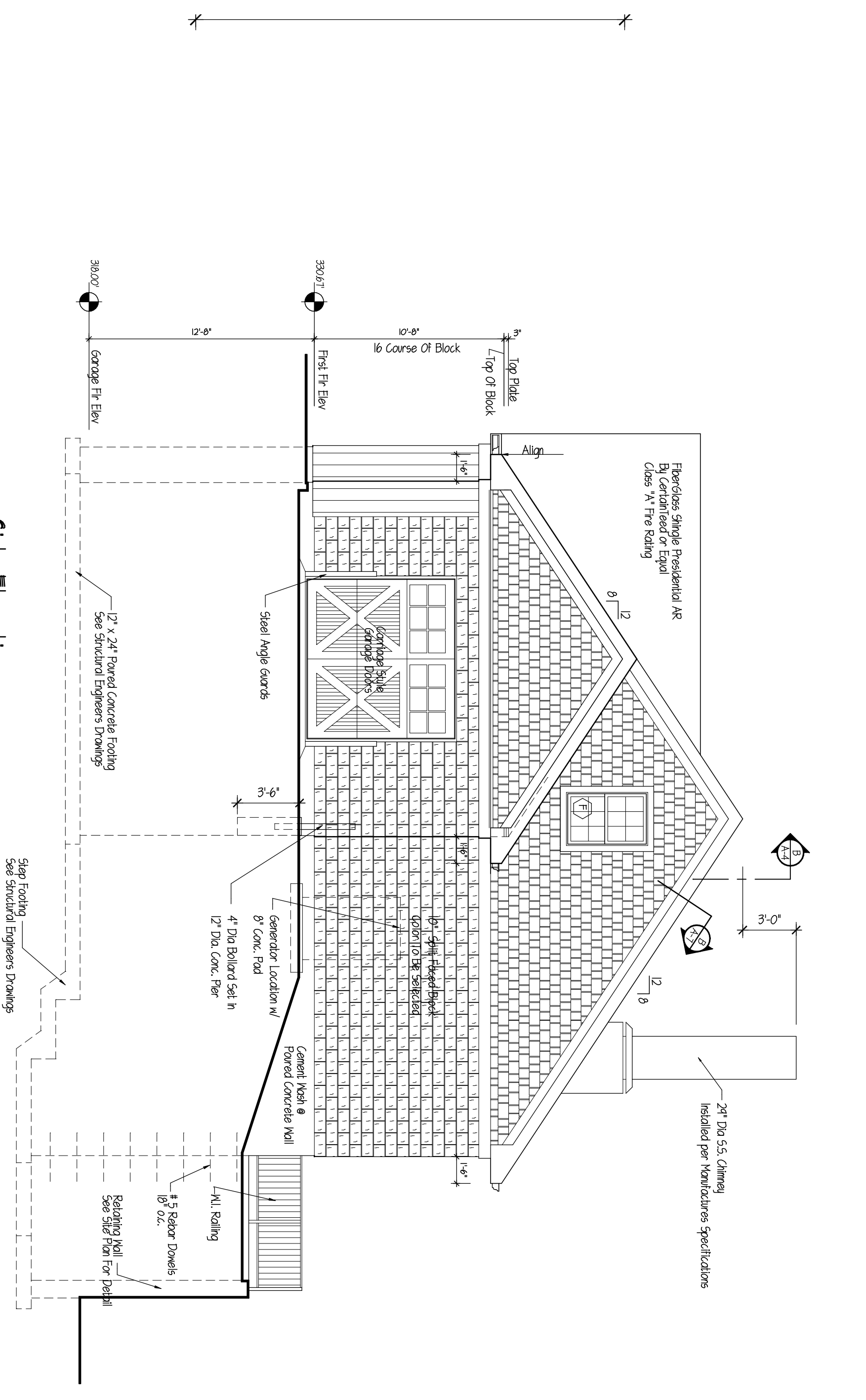


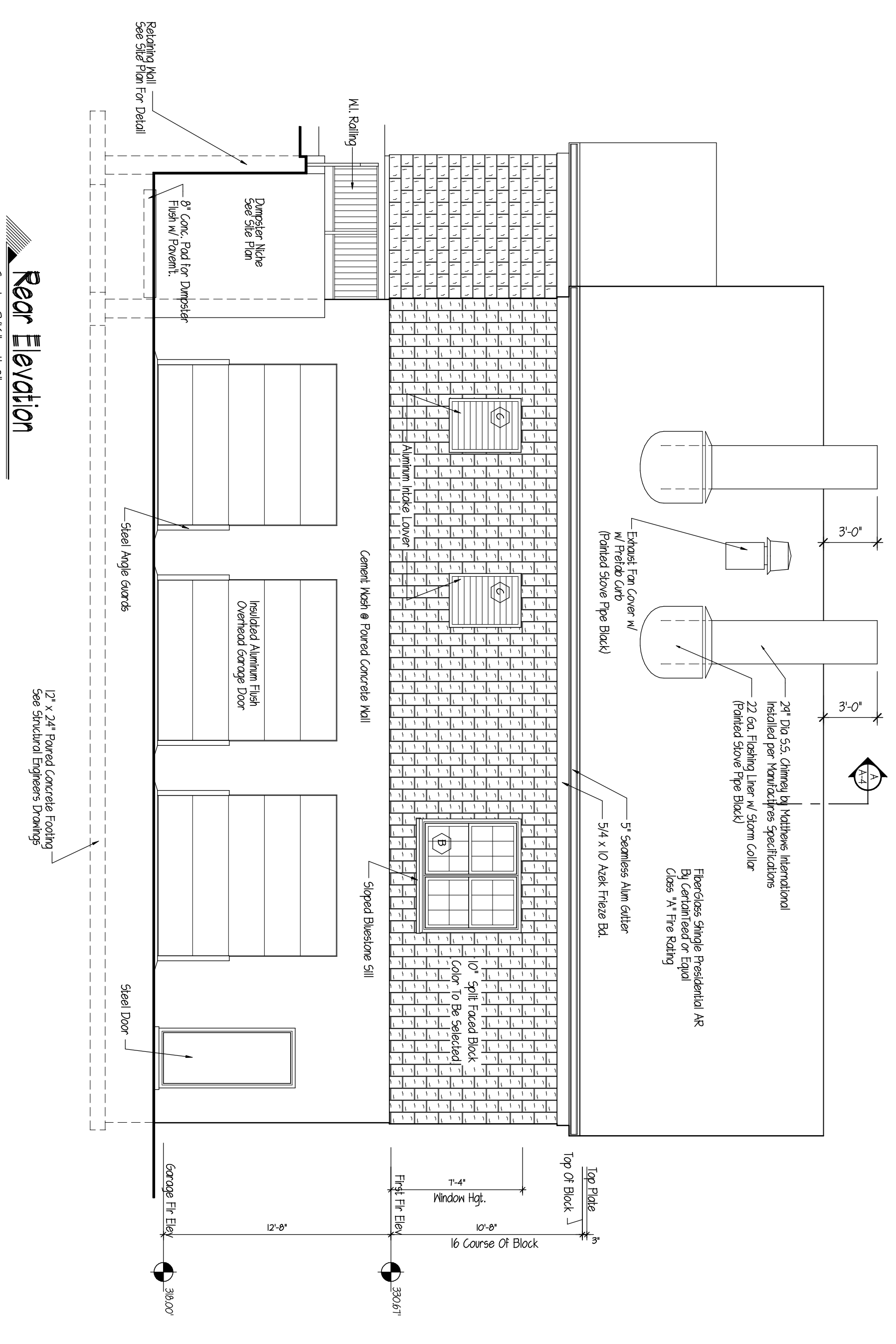
**Front Elevation**  
Scale: 3/16" = 1'-0"



**Side Elevation**  
Scale: 3/16" = 1'-0"



**Side Elevation**  
Scale: 3/16" = 1'-0"



**Rear Elevation**  
Scale: 3/16" = 1'-0"

304 Lexington Ave Mt. Kisco, New York  
Proposed New Cemetery for Oakwood Cemetery

**R. BARRY GOENEY AIA**  
Architects  
2341 LEXINGTON AVENUE, MOUNT KISCO, NEW YORK 10541 (914)666-3858  
P.C.  
DATE: 3-31-10  
JOB: 200-034  
DRAWING: A-1 OF 8

Checked: \_\_\_\_\_  
Date: \_\_\_\_\_

© 2008 R. Barry Goeney AIA, Architects PC. All Rights Reserved. Any use or reproduction in whole or in part, without the written authorization of R. Barry Goeney AIA, is prohibited.